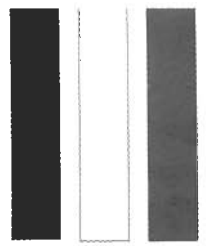
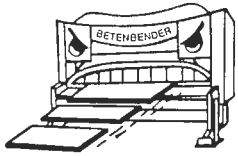


parts catalog



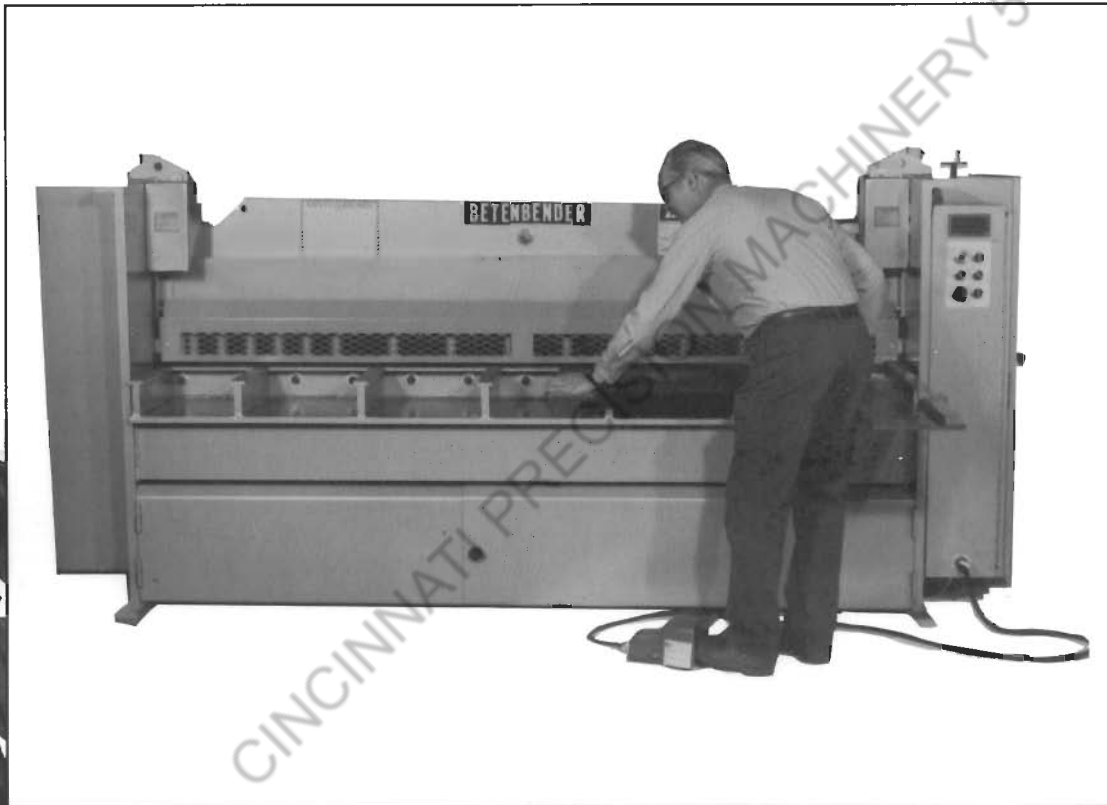
*The Betebender
Family of American
Shears*



MANUFACTURED BY BETENBENDER

SHEARS

THE SIMPLE SOLUTION



BETENBENDER MFG., INC.

SHEAR PARTS LIST

1/4", 3/8", 1/2", 5/8" & 3/4" PARTS LIST

Backgauge	pages 62, 66, 67, 68
Table Top w/Options	page 63
Standard Manual Blade Gap & Power Rapid Blade Gap	page 64
Main Block Assembly	page 70
Control Panel	page 65
Electrical Controls	page 71

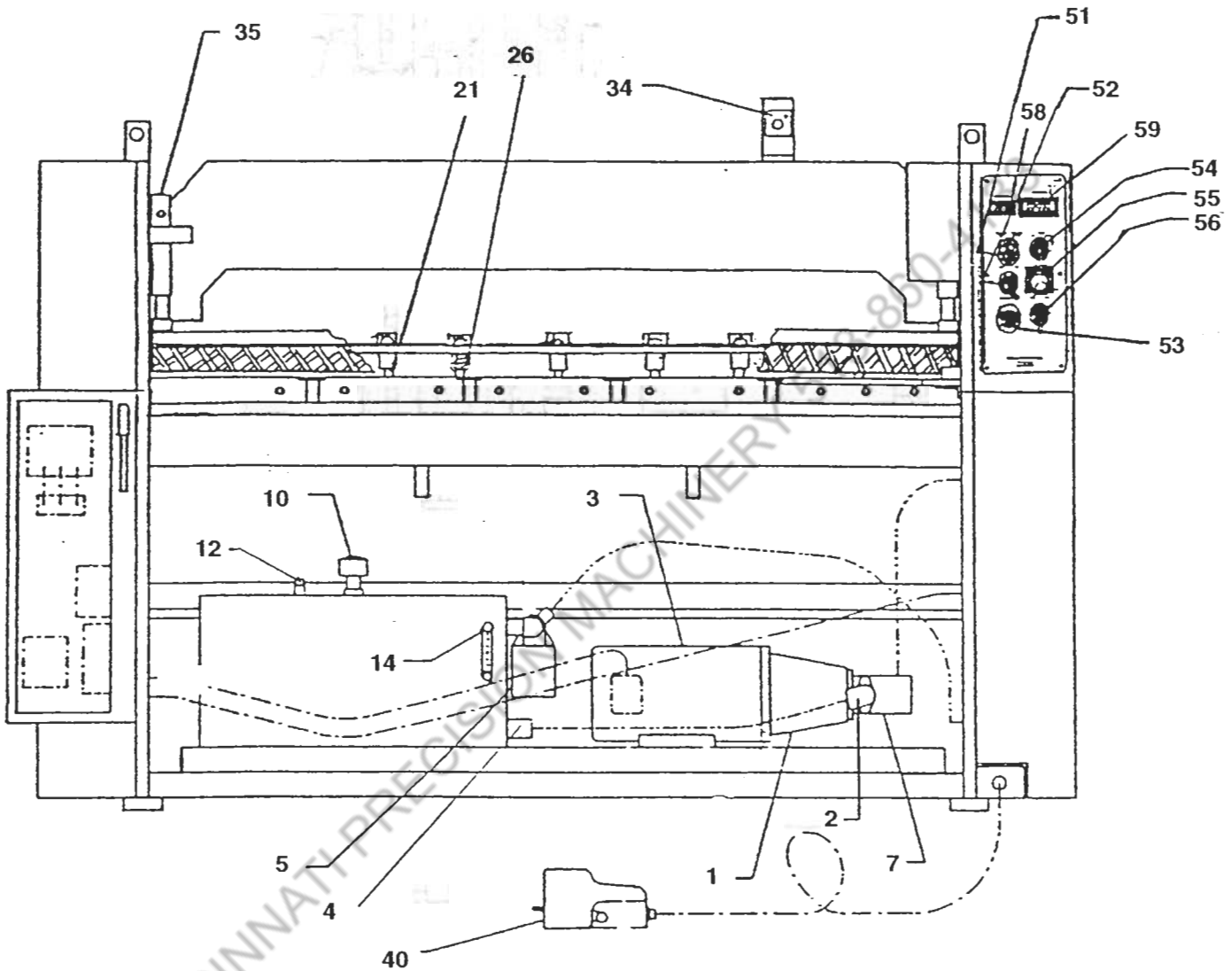
10 GA. & 3/16" PARTS LIST

Index for 10 ga.	page 56
Front View	page 57
Left Side	page 58
Right Side	page 59
Standard Manual Blade Gap	page 64
Control Panel	page 65
Electrical Controls	page 71

CINCINNATI PRECISION MACHINERY 513-860-1133

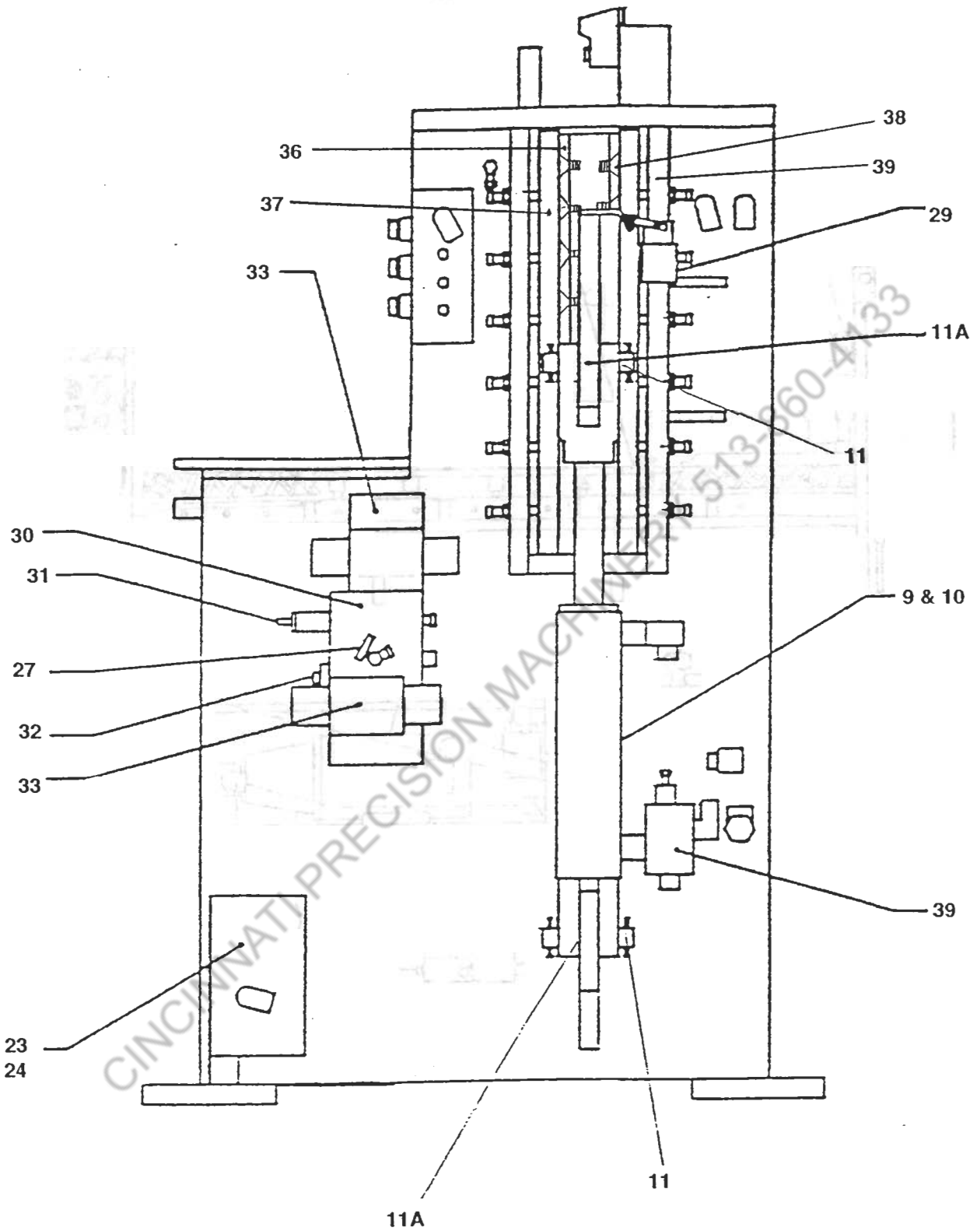
Item No.	Page No.	Part No.	Description	Qty.
(Refers to Blueprint No.)				
1	57	BEF22-A25	Bellhousing	1
2	57	Spider	1
26	57	Holddown Spring	8-21
3	57	CM3313T	Motor - 10 hp	1
21	57	Plunger Holddown	8-21
7	57	9p	Pump	1
5	57	AE10	Return Filter and Housing	1
4	57	TM50	Suction Strainer	1
10	57	Breather Cap	1
14	57	Sight Level	1
12	57	Fill Plug	1
40	57	Footswitch	1
35	57	2002	Holddown Cylinder	2
34	57	Digital Readout	1
51	57	9001	Stop Switch Button	1
52	57	9002	Run-Jog Button	1
53	57	9003	Shear Button	1
54	57	Rake Angle Control	1
55	57	Backgauge Speed Control	1
56	56	Backgauge Directional Control	1
23	58	Relay	1
24	58	Relay Base	1
9	59	E15123C	4" Right Main Cylinder	1
10	58	E15123C	4" Left Main Cylinder	1
27	58	Pressure Gauge	1
11A	58-59	10SF16	Upper and Lower Bearing Assembly	4
29	58-59	Limit Switch	3
30	58	84-0628B	Valve Block #1	1
31	58	RPEC-FAN	Shear Blade Relief Valve	1
32	58	CKEB-XCN	Check Valve	2
33	58	DO5	Directional Control Valve	2
59	57	LED	LED Readout	1
58	57	CUB	Hour Meter	1
39	58	85-0604R	Sequence Valve	1
9A-10A	58-59	A2842	Seal Kits	1
11	58-59	1003625	Upper and Lower Pin	1
35A	58-59	A6591	Seal Kit	2
36	58	10471R	Bronze Gibs (Right)	2
37	58-59	104716	Front Steel Gib	2
38	58	RCS	Recessed Cap Screw	14
39	58-59	104715	Rear Steel Gib	2
36	59	10471L	Bronze Gibs (Left)	2

10 GAUGE & 3/16"



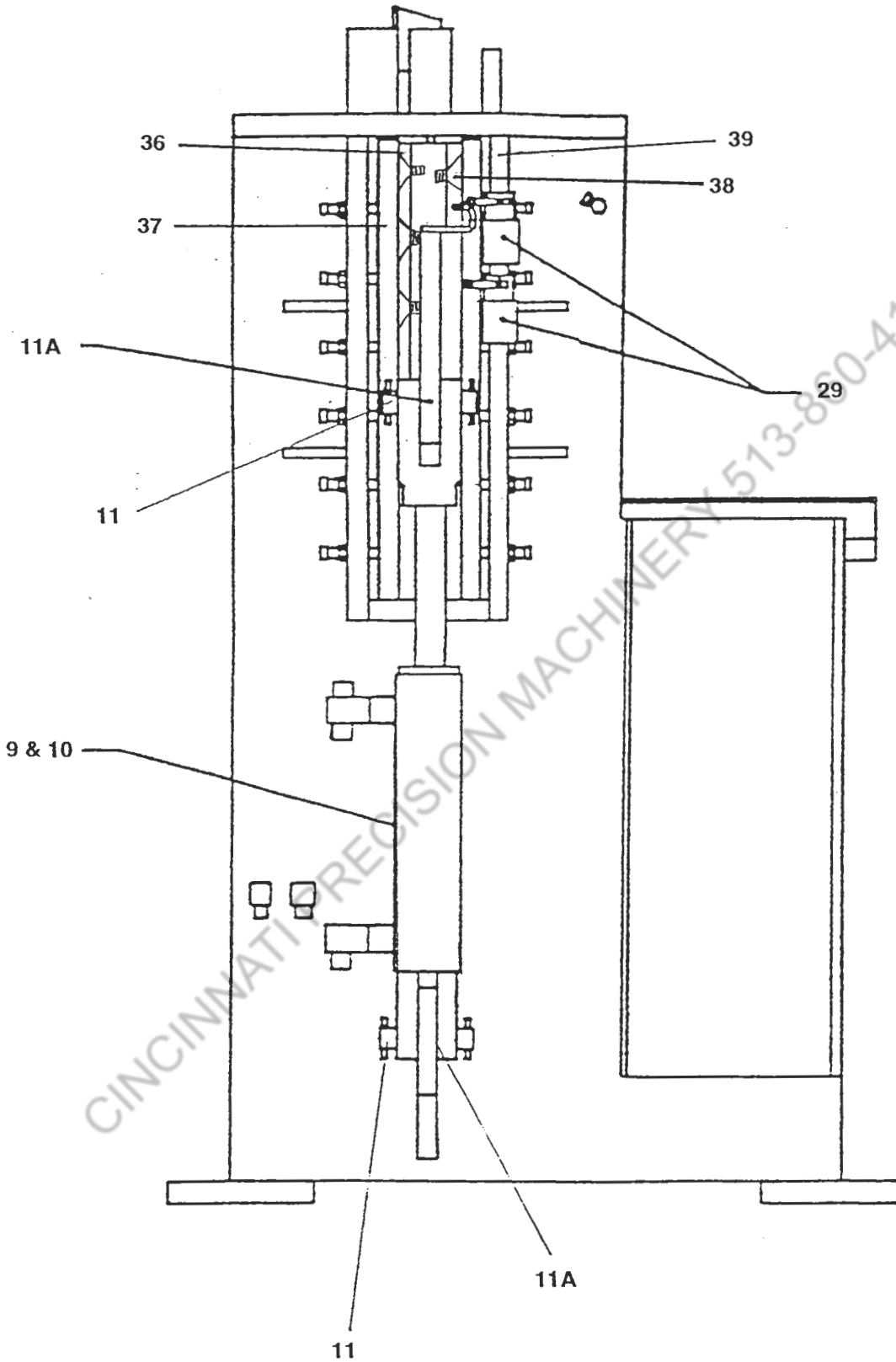
***ALL SAFETY COVERS AND GUARDS MUST REMAIN ON THE SHEAR AT ALL TIMES.**

10 GA. & 3/16" SHEAR
LEFT SIDE



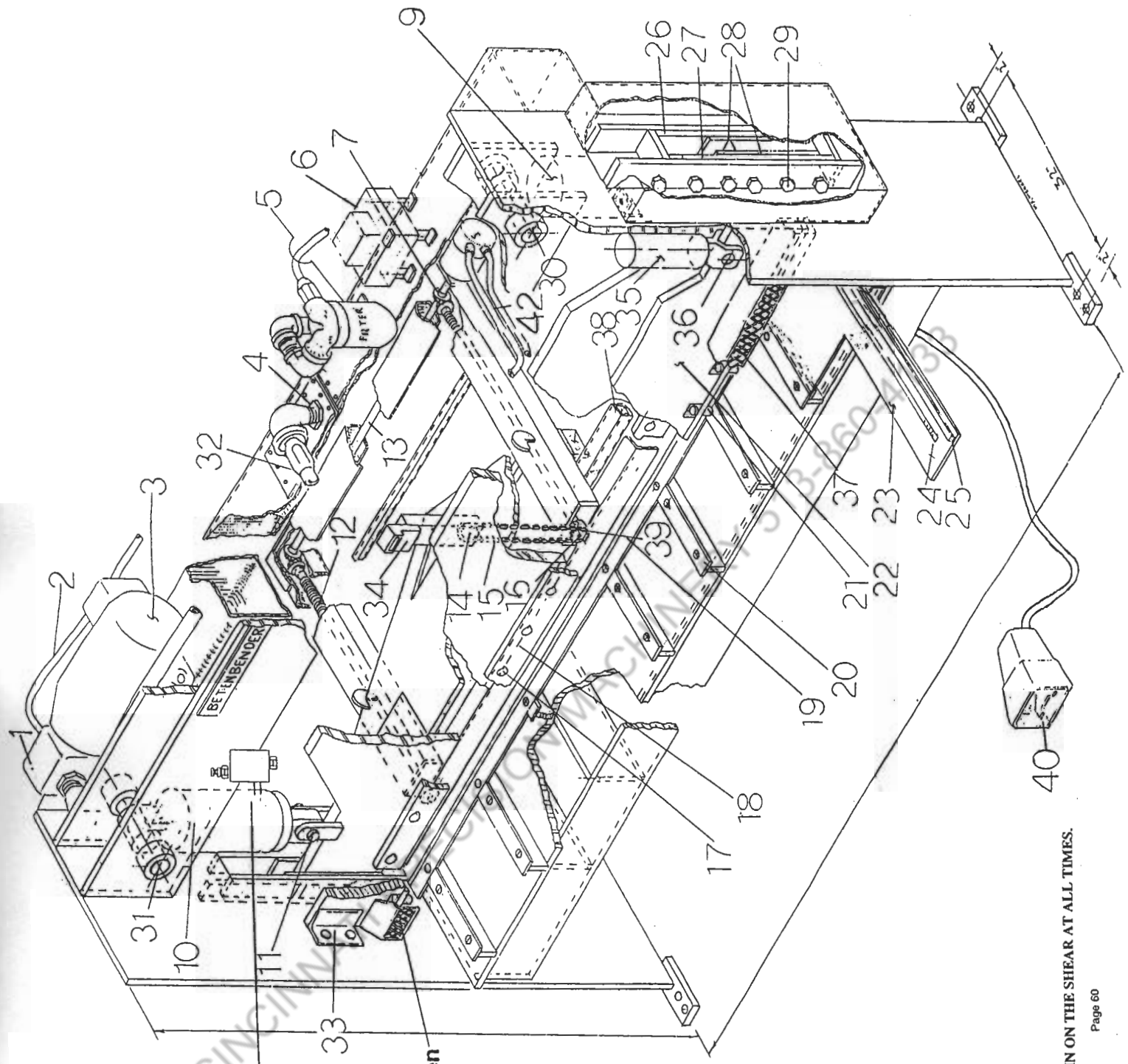
*ALL SAFETY COVERS AND GUARDS MUST REMAIN ON THE SHEAR AT ALL TIMES.

10 GA. & 3/16" SHEAR
RIGHT SIDE



*ALL SAFETY COVERS AND GUARDS MUST REMAIN ON THE SHEAR AT ALL TIMES.

1/4", 3/8", 1/2", 5/8", 3/4"



Safety Screen

*ALL SAFETY COVERS AND GUARDS MUST REMAIN ON THE SHEAR AT ALL TIMES.

Betenbender Manufacturing

Shear Parts List

1/4", 3/8", 1/2", 5/8", 3/4"

Item No.	Page No.	Description
1	62	Pump
2	62	Pressure Line
3	62	Motor
4	62	Suction Strainer
5	62	Return Filter
6	71	Main Valve Block Manifold
7	64, 69	Backgauge Assembly
8 (Not Shown)	67	Control Panel
9	62	Right Main Cylinder
10	62	Left Main Cylinder
11	62	Cylinder Pin (Lower)
12	69	Acme Screw
13	69	Rear Cross Shaft
17	63	Knife Bolt & Nut
18	63	Knives
19	65	Table Wear Strip
20	65	Table Runner Strip
21	65	Plunger Assembly
22	65	Holddown Assembly
23	65	Squaring Arm Assembly
24	65	Scale
25	65	Squaring Arm Bar
26	66	Rear Steel Gib
27	66	Front Steel Gib
28	66	Bronze Gibs
29	66	Gib Bolts & Nuts
30	63	Main Upper Pin
31	63	Upper Pin
32	63	Suction Line
33	63	Holddown Guides
35	63	Holddown Cylinders
36	63	Holddown Pins
37	65	Safety Screen
38	64	Backgauge Bar Assembly
39	69	Backgauge Cylinder Pins
40	65	Footswitch

ITEM NO.	PART NO.	DESCRIPTION	QTY
1	9p 13p 17p 21p	Pump 10 ga, 3/16" 1/4", 3/8" 1/2" 3/4"	1
	BEF22-A2S BEF22-A2L BEF22-B2L BEF40-B2LL	Bell Housing 6' - 12' x 10 ga, 3/16" 1/4", 4'-8' x 3/8" 10' x 3/8", 1/2" 3/4"	1
2	75036 75060 75084 750108 750132	Pressure Hose 4' shear 6' shear 8' shear 10' shear 12' shear	1
	CM3313T CM2513T CM2515T CM2535T CM4110T	Motor 10 hp (10 ga), 3/16" 15 hp (1/4", 3/8") 20 hp (1/2") 30 hp (5/8") 40 hp (3/4")	1
4	TM50	Suction Strainer	1
5	AE10 SE10	Return Filter 10 ga, 3/16" 1/4", 3/8", 1/2", 5/8", 3/4"	1
	SF120	Filter Head	1
9	E15123C E13624CO1 E16472C SB144016 SB144016 SB160030 SB192022	Right Main Cylinder 4" (10 ga), 3/16" 7" (1/4") 8" (4'-8' x 3/8") 9" (10'-12' x 3/8") 9" (4'-8' x 1/2") 10" (10'-12' x 1/2") 12" (3/4")	1

ITEM NO.	PART NO.	DESCRIPTION	QTY
9A	A2842 13017X SKH-C144 SKH-C160 SKH-C192	Seal Kit 4" (10 ga), 3/16" 7" (1/4") 9" (3/8") 10" (1/2") 12" (3/4")	1
	E15123C E13624C E12476B SB128044 SB160030 SB176009 SB176009	Left Main Cylinder 4" (10 ga), 3/16" 7" (1/4") 7" (4'-8' x 3/8") 8" (10'-12' x 3/8") 10" (4'-8' x 1/2") 11" (10'-12' x 3/8") 11" (3/4")	1
10A	A2842 13017X SKH-C128 SKH-C144 SKSH-176002	Seal Kit 4" (10 ga), 3/16" 7" (1/4") 8" (3/8") 9" (1/2") 11" (3/4")	1
	1003625 175006 25007 25008 3009	Cylinder Pin (Lower) (10 ga), 3/16" (1/4") (3/8") (1/2") (3/4")	1
11A	10 SF16 17 SF28 25 SF40 30 SF48	Lower Bearing Assy (10 ga), 3/16" (1/4") (3/8", 1/2") (3/4")	4 4 2 2

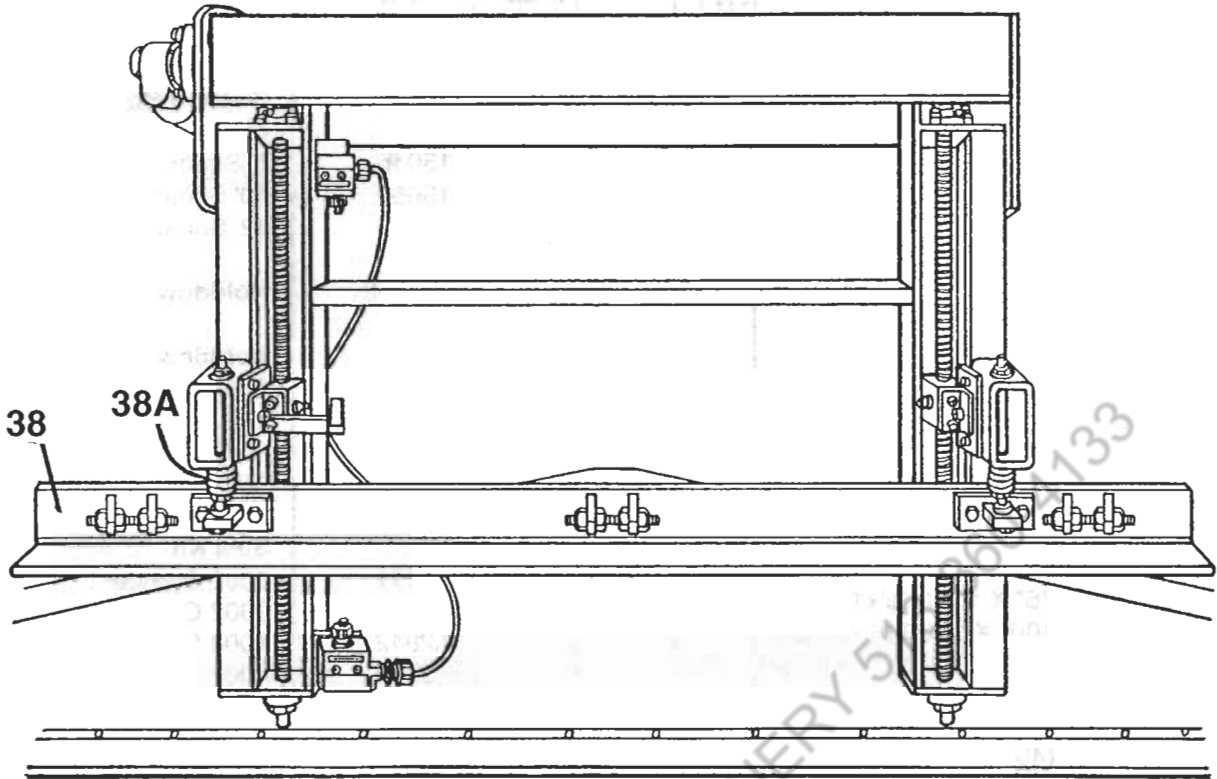
*ALL SAFETY COVERS AND GUARDS MUST REMAIN ON THE SHEAR AT ALL TIMES.

ITEM NO.	PART NO.	DESCRIPTION	QTY	
17		Knife Bolt & Nut		
		4'	14	
		6'	20	
		8'	26	
		10'	32	
		12'	36	
		50035	1/2 X 3.5"	-
		62540	5/8 X 4"	-
		62545	5/8 X 4.5"	-
		75045	3/4 X 4.5"	-
	7505	3/4 X 5"	-	
	7506	3/4 X 6"	-	
	7507	3/4 X 7"	-	
18		Knives-Mark II		
		62" X 1/2 X 2 (5' x10 ga)	2	
		76" X 1 X 3 (6'x10 ga)	2	
		100" X 1 X 3 (8'x10 ga)	2	
		124" X 1 X 3 (10'x10 ga)	2	
		148" X 1 X 3 (12'x10 ga)	2	
		520001	52" X 4 X 1 (4'x1/4", 3/8", 1/2")	2
		760002	76" X 4 X 1 (6'x1/4", 3/8", 1/2")	2
		1000005	100" X 4 X 1 (8'x1/4", 3/8", 1/2")	2
		1240007	124" X 4 X 1 (10'x1/4", 3/8", 1/2")	2
		1480007	148" X 4 X 1 (12'x1/4", 3/8", 1/2")	2
		05520002	52" X 1.125 X 5 (4'x3/4")	2
		05760003	76" X 1.125 X 5 (6'x3/4")	2
		0510000006	100" X 1.125 X 5 (8'x3/4")	2
		051240008	124" X 1.125 X 5 (10'x3/4")	2
	30		Main Upper Pin	2
	31		Upper Pin	
		17513	(1/4") 3/16"	2
25021		(3/8")	2	
25022		(1/2")	2	
	30023	(3/4")	2	

ITEM NO.	PART NO.	DESCRIPTION	QTY
32		Suction Hose	
	15036	4'-6' Shear	1
	15046	8' Shear	1
	15060	10' Shear	1
	15072	12' Shear	1
33	705340	Holddown Guides	2
35		Holddown Cylinder	
	2002	10 ga, 3/16"	2
	3002	1/4"	2
	4008	3/8", 1/2"	2
	4002	3/4"	2
35A		Seal Kit	
	A6591	2002 Cylinder	
	A2525	3002 Cylinder	1
	A2842	4008 Cylinder	1
	A2842	4002 Cylinder	1
36		Holddown Pins	
	6253500	.625 x 3.5 (10 ga) 3/16"	
	1002500	1 X 2.5 (1/4")	4
	1003000	1 X 3 (3/8", 1/2")	4
	1003500	1 X 3.5 (3/4")	4

*ALL SAFETY COVERS AND GUARDS MUST REMAIN ON THE SHEAR AT ALL TIMES.

BACKGAUGE

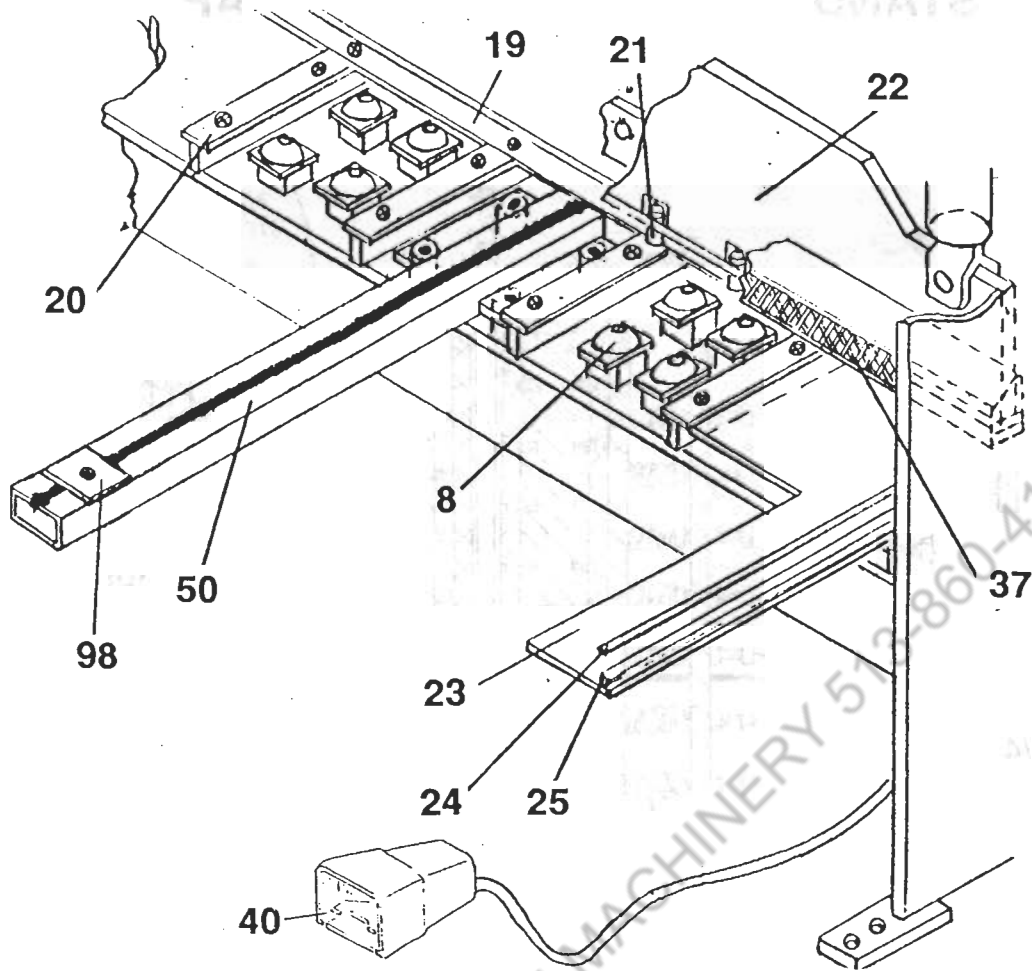


(View From Bottom)

ITEM NO.	PART NO.	DESCRIPTION	QTY
38	70548 70572 70596 705120 705144	Backgauge Bar Assy 4' Shear 6' Shear 8' Shear 10' Shear 12' Shear	1
38A	705500	Shock Absorber Springs	2

***ALL SAFETY COVERS AND GUARDS MUST REMAIN ON THE SHEAR AT ALL TIMES.**

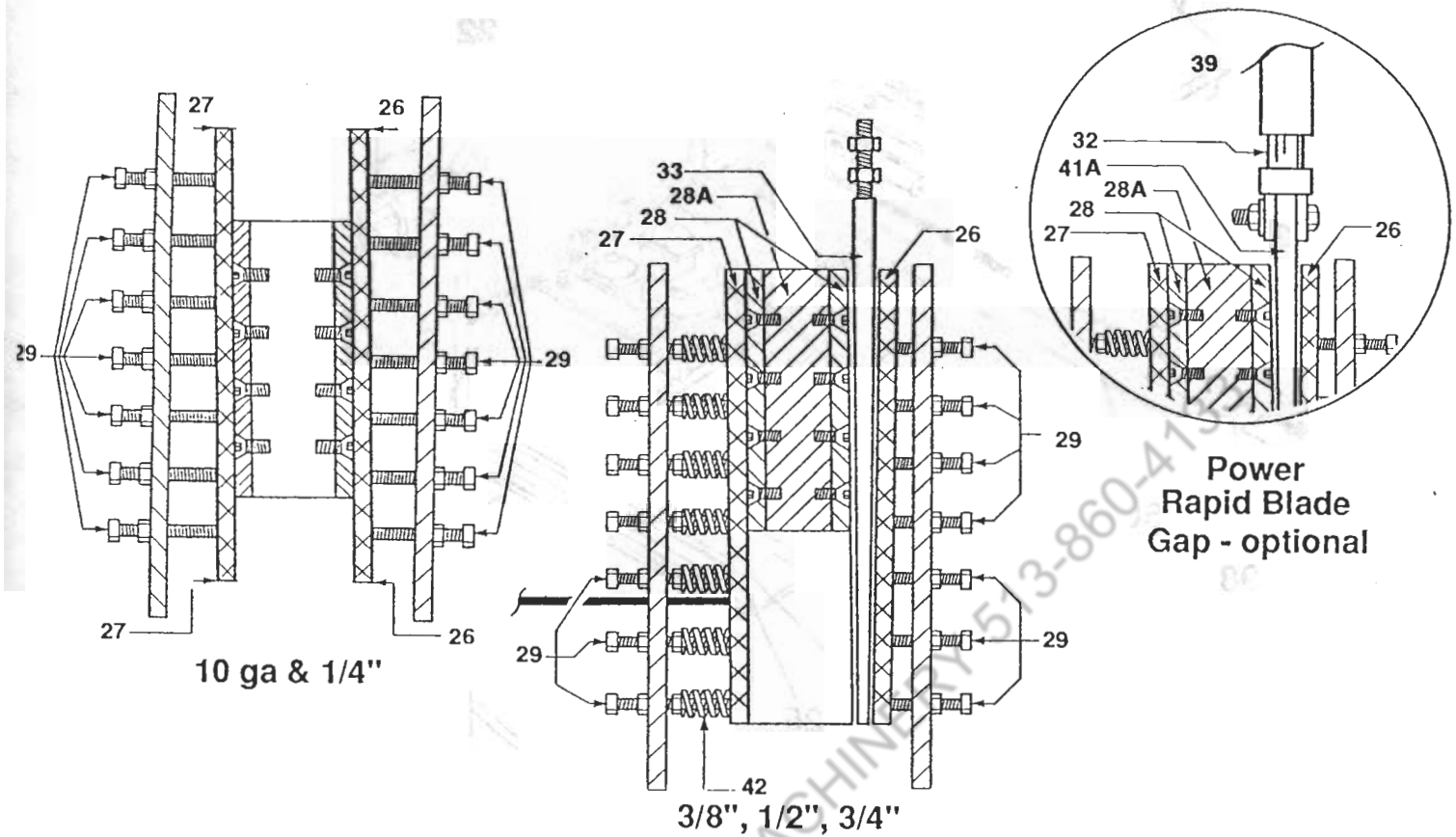
TABLE TOP WITH OPTIONS



ITEM NO.	PART NO.	DESCRIPTION	QTY	ITEM NO.	PART NO.	DESCRIPTION	QTY
19	705414	Table Wear Strip (size of machine)	1	24	S048	Scale Scale 0-48	2
20	705415	Table Runner Strip (size of machine)	3-12		S072	Scale 0-72	3
21	705416	Plunger Assembly (size of machine)	8-21		S096	Scale 0-96	4
22	705417	Holddown Assembly (size of machine)	1		S0120	Scale 0-120	5
23	SA4-12	Squaring Arm	1	25	SB4-10	Squaring Bar	1
97		Spring Holddown	8-21	37	705418	Safety Screen (size of machine)	1
				40	B3A	Footswitch	1
				8	705419	Ball Transfer	1-6
				50	705420	Support Arm	1-3
				98	705444	Flip Up Stops	1

***ALL SAFETY COVERS AND GUARDS MUST REMAIN ON THE SHEAR AT ALL TIMES.**

STANDARD MANUAL BLADE GAP

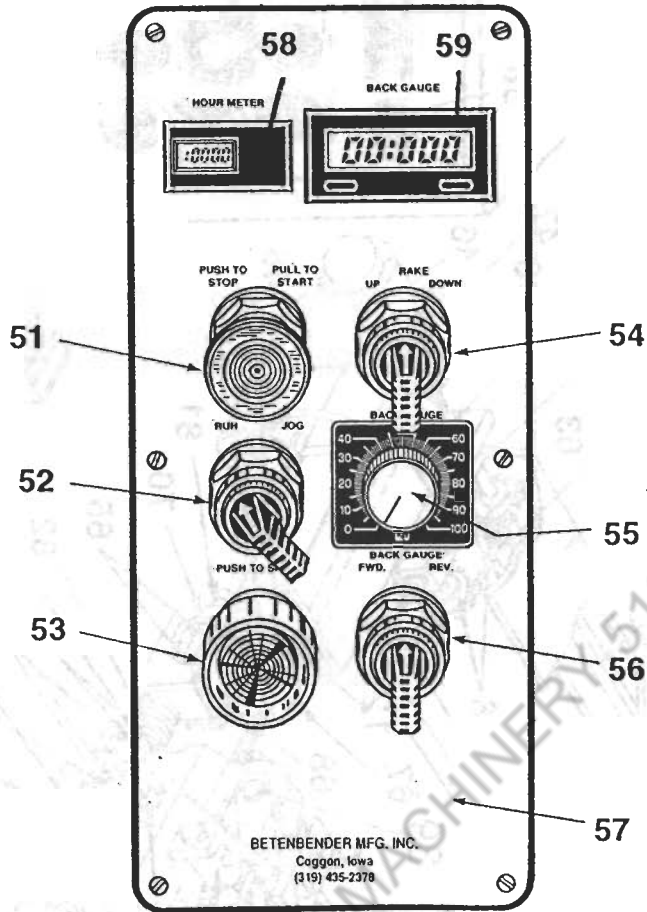


Power
Rapid Blade
Gap - optional

ITEM NO.	PART NO.	DESCRIPTION	QTY
26	704715	Rear Steel Gib	2
27	704716	Front Steel Gib	2
28	704717L	Bronze Gibs (Left)	2
28	704717R	Bronze Gibs (Right)	2
28A	RCS	Recessed Cap Screw for Bronzing Gibs (10 ga, 3/16", 1/4") (3/8", 1/2", 3/4")	7 9
29	704719	Gib Bolts	28
29	704720	Gib Nuts	28
39	3004	Hydraulic Cylinder 3 position Power Rapid Blade Gap	1
	3002	2 Position Power Rapid Blade Gap	
39A	A2525	Seal Kit	1
41	704721	Taper Slide	2
41A		Power Taper	1
42		Spring	13

*ALL SAFETY COVERS AND GUARDS MUST REMAIN ON THE SHEAR AT ALL TIMES.

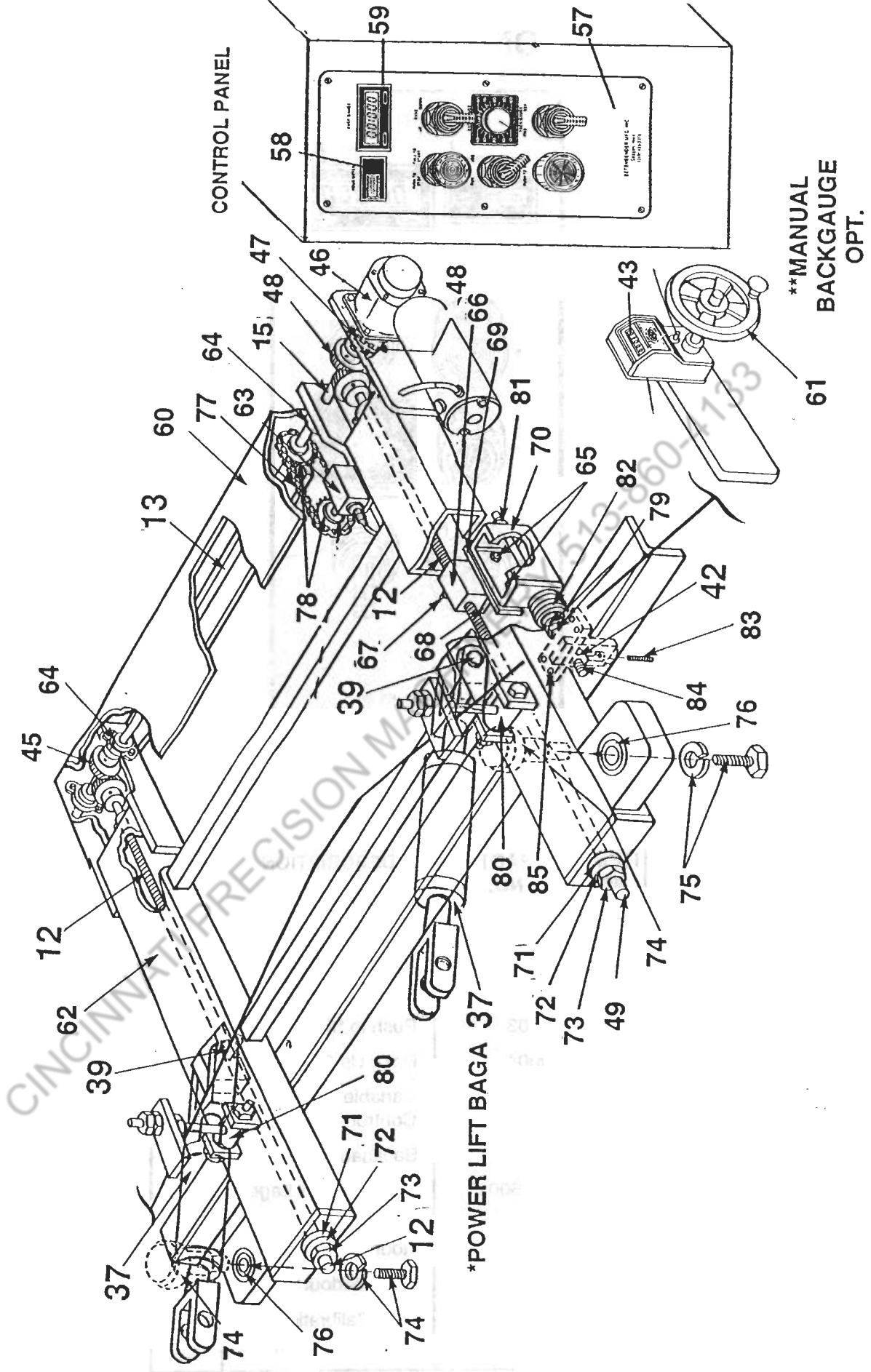
CONTROL PANEL



ITEM NO.	PART NO.	DESCRIPTION	QTY
51	9001	Push to Stop/ Pull to Start	1
52	9002	Run-Jog	1
53	9003	Push to Shear	1
54	9004	Rake Up-Down	1
55	9007	Variable Speed Control	1
56	9006	Backgauge Fwd-Rev	1
57	CPS001	Control Panel Legend	1
58	CUB	Hour Meter	1
59	LED	Led Readout	1
		Dual Calibration (Opt. not shown)	1

***ALL SAFETY COVERS AND GUARDS MUST REMAIN ON THE SHEAR AT ALL TIMES.**

STANDARD MANUAL LIFT BACKGAUGE 3/8", 1/2", 3/4"



*POWER LIFT BAGA 37

**MANUAL BACKGAUGE OPT.

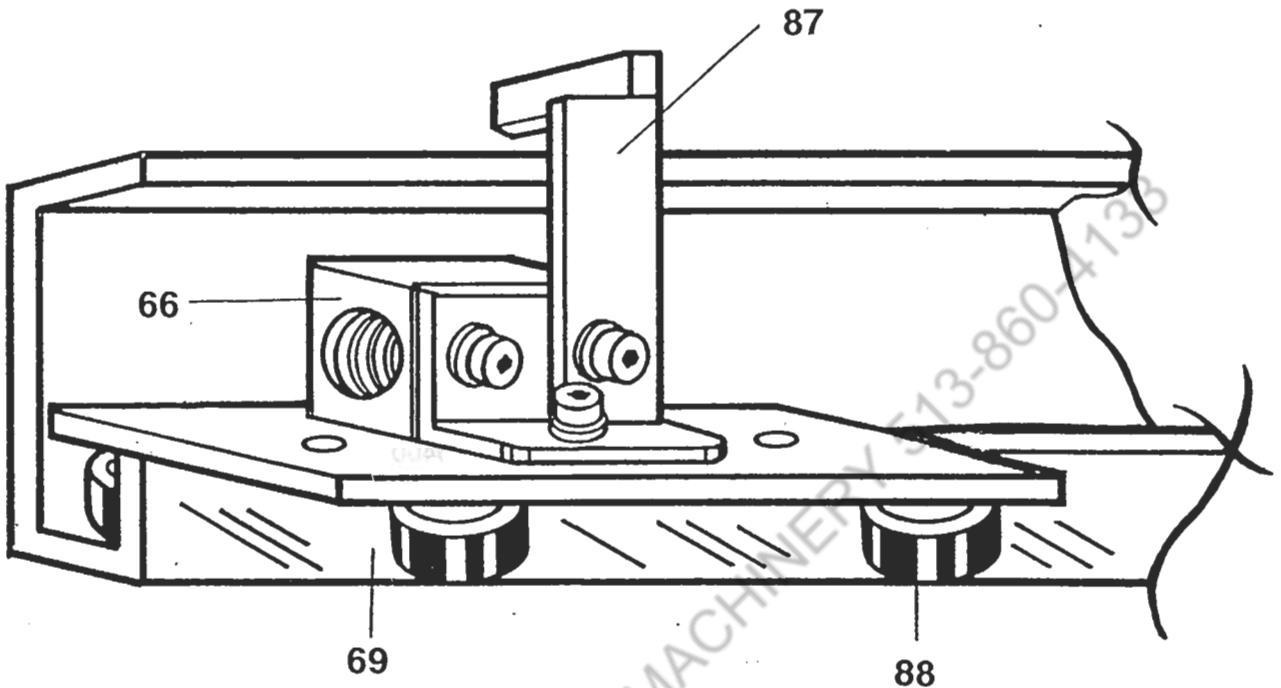
*ALL SAFETY COVERS AND GUARDS MUST REMAIN ON THE SHEAR AT ALL TIMES.

ITEM NO.	PART NO.	DESCRIPTION	QTY
43	06179T	Manual Baga (Opt.) Readout (Opt.)	1
44	M10258	Tapered Gear	3
45	Mk10258	Tapered Gear	1
46	GPF13514	Electric Motor	1
47	LJ100	Coupling	2
48	LJ095	Spyder	1
12	705636	Screw	2
13	705611	Cross Shaft	1
60	705612	Cover Shield	1
58	CUB	Hour Meter	1
57	CPS001	Control Panel Legend	1
61	06175	Drive Wheel (Opt.)	1
62	705615	Frame	1
63	RPGQ0200	Encoder	1
64	124645	Bearing	5
59	LED	LED Readout	1
66	705616	Bronze Nuts	2
67	705617	Grease Fitting	2
68	705618	Angle Bracket	2

ITEM NO.	PART NO.	DESCRIPTION	QTY
65	705619	Adjusting Screw	4
69	705621	Guide Plate	2
70	705622	Gib	2
71	705623	Hub	2
72	124646	Bearing	2
73	705624	Locknut	2
74	BBGWM	Weld on Mount	2
75	500200	Bolt 1/2 X 2	2
76	705625	Lockwashers	2
37	300400	Cyl-Lift (Opt)	2
39	705627	Pins	4
77	RS25	Chain Drive (Opt.)	1
78	25B24	Sprockets (Opt.)	2
79	JM14	Nuts	3
80	BBGM2	Mounts	2
81	KN14	Locknut	2
82	705500	Spring	2
83	DV38163	Set Screw	2
84	BBGBS	Bolt Spring Assy	2
85	DV121	Bolts 1/2 X 1	4
86	B-500	Electrical Box (10 ga & 3/16", 1/4")	1
	B-500-15	(3/8", 1/2", 5/8", 3/4")	
89		Backbar Mount	1

***ALL SAFETY COVERS AND GUARDS MUST REMAIN ON THE SHEAR AT ALL TIMES.**

BACKBAR CARRIER (View from side)

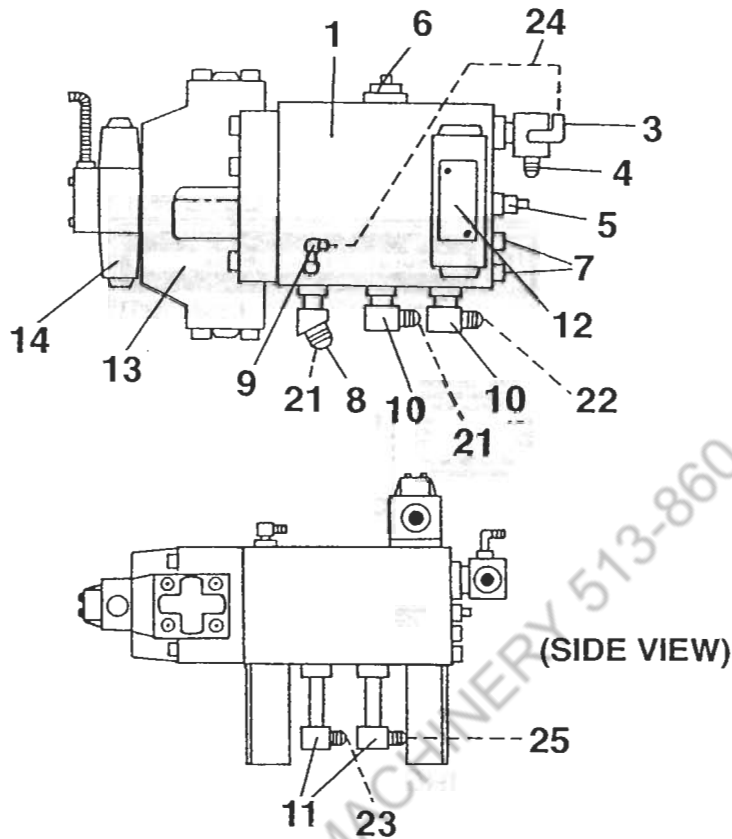


ITEM NO.	PART NO.	DESCRIPTION	QTY
66	705820	Bronze Nut	2
69	705821	Guide Bar	2
	705822	Limit Switch (Not Shown)	2
87	705823	Trip Arm	1
88	705824	Cam Followers	8

***ALL SAFETY COVERS AND GUARDS MUST REMAIN ON THE SHEAR AT ALL TIMES.**

MAIN BLOCK ASSEMBLY

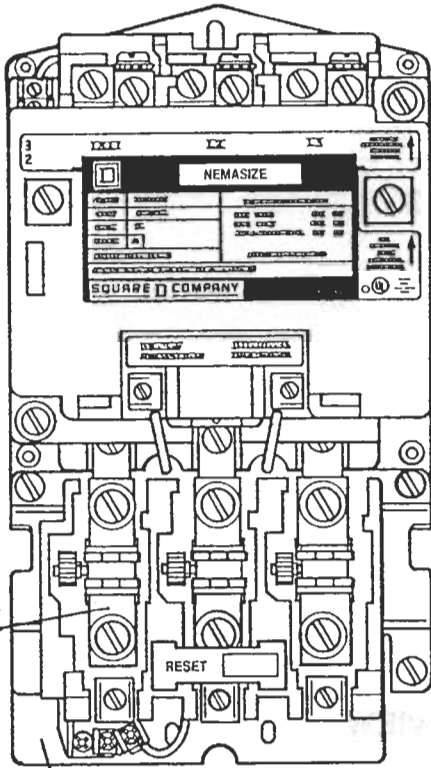
1/4", 3/8", 1/2", 5/8", 3/4"



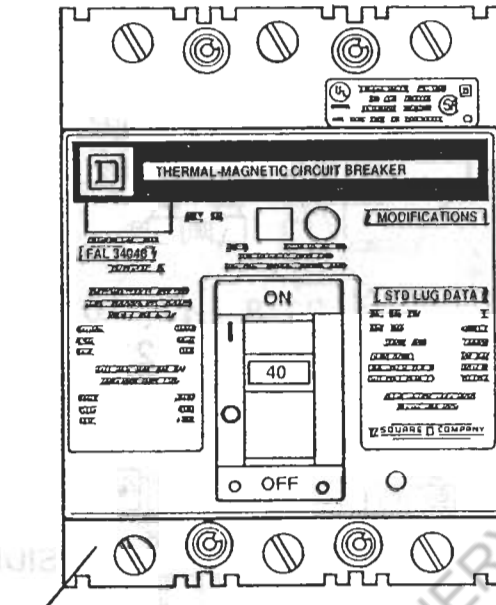
ITEM NO.	PART NO.	DESCRIPTION	QTY	ITEM NO.	PART NO.	DESCRIPTION	QTY
1	85-0327	Main Control Block	1	20	5515x8x10	Fitting	1
2	5365x8	Fitting	1	21	75072	Hose	1
3	5405x4x4	Fitting	1	22	50060	Hose	2
4	5515x8x12	Fitting	1	23	50024	Hose	2
5	FREA-LAN	Comp. Flow Valve	1	24	25024	Hose	1
6	RPGA-FAN	Main Relief	1	25	75030	Hose	2
7	CXCB-XCN	Check Valve	2				
8	5515x4	Fitting	1				
9	6801-4-4	Fitting	1				
10	TF5515X8	Fitting	3				
11	6801L12	Fitting	2				
12	D05	Control Valve	2				
13	D08	Control Valve	1				
14	111652	Coil	2				

*ALL SAFETY COVERS AND GUARDS MUST REMAIN ON THE SHEAR AT ALL TIMES.

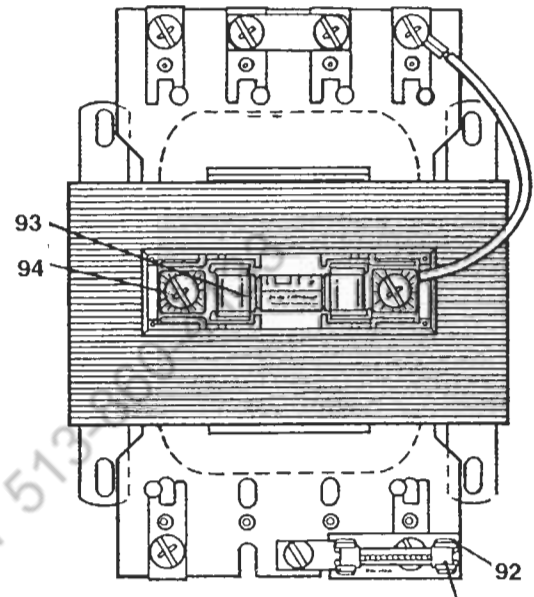
ELECTRICAL CONTROLS



90 STARTER



95 CIRCUIT BREAKER



91 TRANSFORMER

ITEM NO.	PART NO.	DESCRIPTION	QTY
90	G2 G3	Starter Assy (10 ga), 3/16" (1/4", 3/8", 1/2", 5/8", 3/4")	1
91	MDL5	Bottom Fuse	1
92	636-7412	Bottom Fuse Holder (1/4" - 3/4")	1
93	FNQ	Top Fuse (10 ga - 3/4") (10 ga), 3/16"	1
94	BM6031B	Top Fuse Holder	1
95	FAL340	Circuit Breaker Disconnect (according to amperage)	1
96	B-	Heaters (according to amperage)	3

*ALL SAFETY COVERS AND GUARDS MUST REMAIN ON THE SHEAR AT ALL TIMES.

REPLACEMENT FILTERS

10 ga. 3/16" BETENBENDER SHEAR

ZINGA AE-10	VESCOR 70134	WIX 51551	LHA SPE-15-10	FRAM P-1653 P-1653A
HYCON MFE-80-10-2	AC DELCO PF-26	BALDWIN BT-839-10	PARKER 925516	DONALDSON P15-1553

1/4", 3/8", 1/2", 5/8", 3/4", BETENBENDER SHEARS

ZINGA SE-10 LE-10*	VESCOR 70158 70172*	WIX 51759	LHA SPE-50-25 SPE-60-25*	FRAM PH-3567
HYCON MFE160-25-2 MFE160/1-25-2*	AC DELCO PF-2023	BALDWIN BT-387 BT-388*	PARKER 926170 927736*	DONALDSON P16-5879 P16-5880*

*Long type filter

RECORDS

EDGE **DATE** **BY WHOM**

#1

#2

#3

#4

Sharpened or Replaced

#1

#2

#3

#4

Sharpened or Replaced

#1

#2

#3

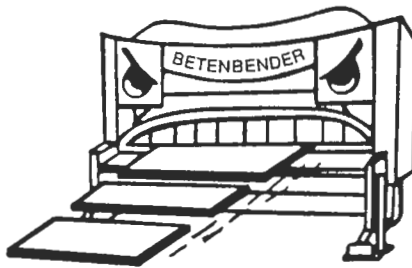
#4

Oil & Filter Change

Parts Replaced

CINCINNATI PRECISION MACHINERY 513-860-4133

CINCINNATI PRECISION MACHINERY 513-860-4133



**MANUFACTURED
BY BETENBENDER**
5806 Quality Ridge Road
Coggon, Iowa • 52218