

PARTS LIST

<u>REF.</u>	<u>PART NO</u>	<u>DESCRIPTION</u>
1	736-00	Top Cover
2	702-00	Center
3	423-00	Angle Iron Hold-down Adjustment Screw
4	410-01	Angle Iron Hold-down Mount
5	428-00	Angle Iron Rest
6	178-00	Bar & Rod Shear Hold-down Hinge (2 required)
7	786-00	Bar & Rod Shear Hold-down
8		Hardened Bushing -3 1/2" OD x 3" ID x 2 1/2" Long
9	128-00	Gib Pin Assembly - Greaseless (18 required)
10		Jam Nut 1 1/4"
11	721-00	Notcher Guard
12		Notcher Guard Spring Plunger Bolts (2 required)
13	733-00	Top Notcher Blade
14	734-00	Bottom Notcher Blade (3 required)
15	731-00	Notcher Table
16	127-00	Brass Slide (16 required)
17	701-00	Guide Block (8 required)
18	727-00	2 1/2" Guide Pins
19		3" Flat Washer (8 required)
20	115-40	Link Pin Retainer
21	728-30	3" Link Pin - Bottom
22	919-00	2 1/2" Pivot Pin
23	799-04	Links (2 required)
24	705-00	Whale
25		Hardened Spring Bushing (order by OD x ID x Length)
26		3 1/2" Flat Washer (3 required)
27		2" - Top Cylinder Pin, Greaseless
28		Hydraulic Cylinder - 6"
29		2" - Bottom Cylinder Pin, Greaseable
30	730-00	Cylinder Cover
31	816-00	Spacer Plate
32	265-00	Hardened Backup Plate
33	817-00	Top Die Plate
34		Die (order by size)
35		Punch (order by size)

PARTS LIST

<u>REF.</u>	<u>PART NO.</u>	<u>DESCRIPTION</u>
36	222-00	Punch Nut
37	818-00	Punch Holder
38	625-00	Punch Shield
39	755-00	Punch Stripper
40		Electrical Starter Box (order by HP, Phase, Voltage)
41	476-00	Bottom Brake Die (optional)
42	477-00	Top Brake Punch (optional)
43	738-00	Drop Off Chute
44	232-02	Bar & Rod Shear Guard
45	719-00	Bottom Angle Blade (2 required)
46	712-00	Top Angle Blade
47	447-00	Angle Iron Guard
48	781-00	Foot Pedal Assembly
49		72" Green Foot Cable
50	413-02	14" Bar Shear Blade (2 required)
51	747-00	Valve Arm
52		Up Stroke Limitor
53	4-75100	Hose - Pump to Directional Valve (return)
54		Cable Adjustment Yoke
55		Directional Valve
56	2-75100	Hose - Bottom Directional Valve to Top Cylinder
57	3-75100	Hose - Top Directional Valve to Bottom Cylinder
58	5-75100	Hose - Pump to Tank Dump Hose
59		Sensor Pipe for 2 Stage Pump
60		Hydraulic Pump - Barnes 16 gallon 2 State Pump
61		Pump to Suction Pipe Adaptor - O Ring Compression
62		Electric Motor 5HP
63		C-Face Pump Adapter
64		Motor to Pump Coupler with Spider
65	777-00	22 Gallon Oil Reservoir
66		1" x 10" Pipe Nipple
67		Hydraulic Oil Strainer
68		Oil Reservoir Cover
69		Breather Cap
70		3/4" x 10" Pipe Nipple

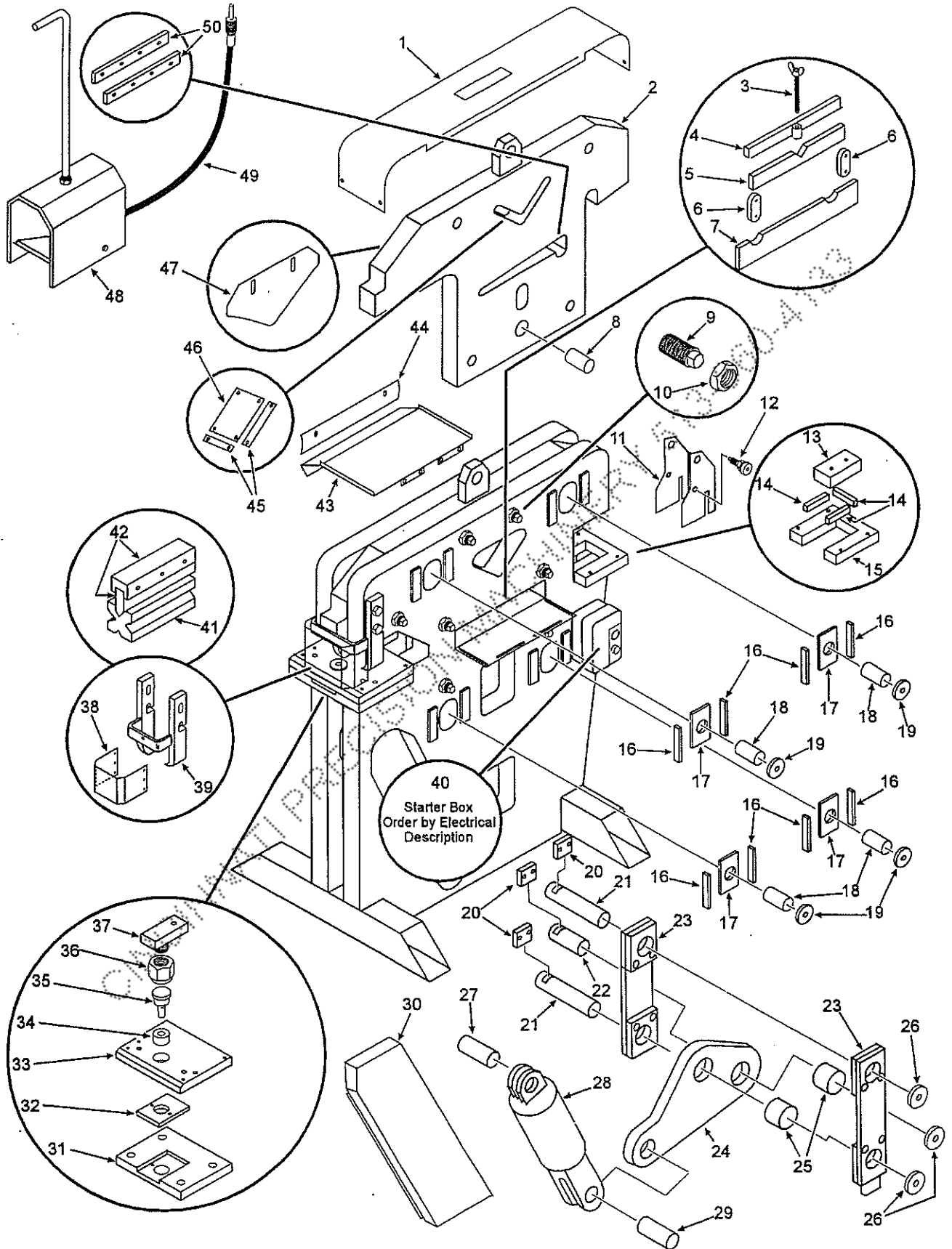
PARTS LIST

11-15-99

<u>REF.</u>	<u>PART NO.</u>	<u>DESCRIPTION</u>
71		3/4" Street Elbow
72		Oil Filter
73		Oil Filter Head Assembly
74	1-75100	Hose - Directional Valve to Filter Return
75		Spring Tension Adjustment
76		Spring (V-7)

CINCINNATI PRECISION MACHINERY 513-860-4133

"JAWS IV" 75 TON



"JAWS IV" 75 TON

