

5+ Drive Slicer Replacement

MIR-SDC-1 (Belt Replacement)
old and new styles, M-825 and M-800 Series

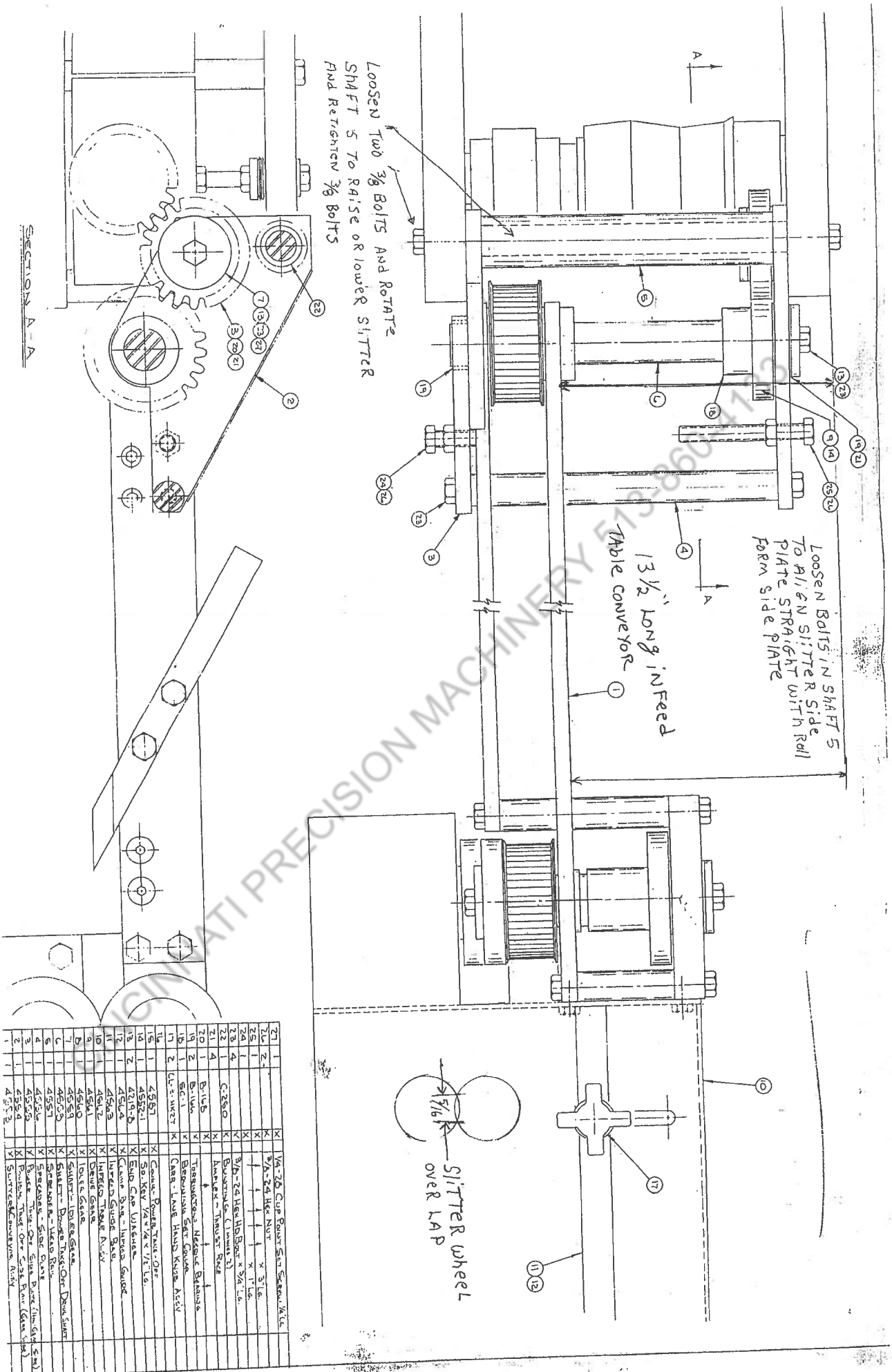
- ▶ Remove infeed table attached to slicer. Look under infeed table mounted to slicer
- ▶ Remove 1/4"-28 socket head bolts (4 pieces) using 3/16" Allen wrench
- ▶ Note: Older style slicers may require tables were mounted with 1/4"-28 Hex Head bolts
- ▶ Remove 3/8"-24 Hex Head bolts and 1-1/4" end caps attaching cutting rolls, slicer knife blades (part # 4573), to slicer assembly
- ▶ Remove cutting rolls
- ▶ Note: Behind cutting rolls will be shims using a micrometer or calipers (verniers) measure thickness of shims behind cutting rolls. Be sure to reinstall the same amount of shims behind the top and the bottom of cutting rolls when reinstalling. Also, there will be shims behind the 1-1/4" end cap
- ▶ Measure thickness. Be sure to use the same amount when reinstalling
- ▶ Remove 3/8"-24 Hex Head bolts attaching slicer housing to power
- ▶ Take off side plate (gear side) #35 as per assembly drawings #2
- ▶ Remove only the bolts at infeed end of slicer assembly (2 pieces)
- ▶ Next remove 3/8"-24 Hex Head tap bolts #45 as per drawing (2 pieces)
- ▶ Hold slicer housing assembly, pull assembly away from slicer, this will allow gear belt pulley to hang freely. Lay aside housing assembly. Remove gear belt pulley
- ▶ Remove 3/8"-24 Hex Head bolt attaching slicer to head assembly (roll former)
- ▶ Remove only the bolt on left side of spreader - head rail #5 as per drawing #1
- ▶ Loosen 1/4"-20 set screw, hold set collar in place.
- ▶ Slide set collar #18 as per drawing #1 and drive gear #9 away from power
- ▶ Take off side plate (gear side)
- ▶ Remove 1/4" key stock from power
- ▶ Take off shaft #6 per print #1
- ▶ Remove 3/8"-24 Hex Head bolt #23. Side power take off shaft to right side of machine
- ▶ To remove power take off shaft from power take off side plate (non gear side) swing side plate (non gear side) in up position
- ▶ Remove worn belt, replace with new belt

Reverse these steps to reassemble

Note: To reinstall gear belt pulley on slicer housing assembly:

Install gear belt pulley in belt position pulley slide upper knife shaft through conveyor side plate into pulley. Install 3/8"-24 bolts, tighten. Be careful not to stretch or pry on belt when reinstalling.

CINCINNATI PRECISION MACHINERY



Loosen Two $\frac{3}{8}$ Bolts and Rotate Shaft 5 to Raise or Lower Slitter and Retighten $\frac{3}{8}$ Bolts

Loosen Bolts in Shaft 5 to Align Slitter with Roll Plate Straight with Roll Form Side Plate

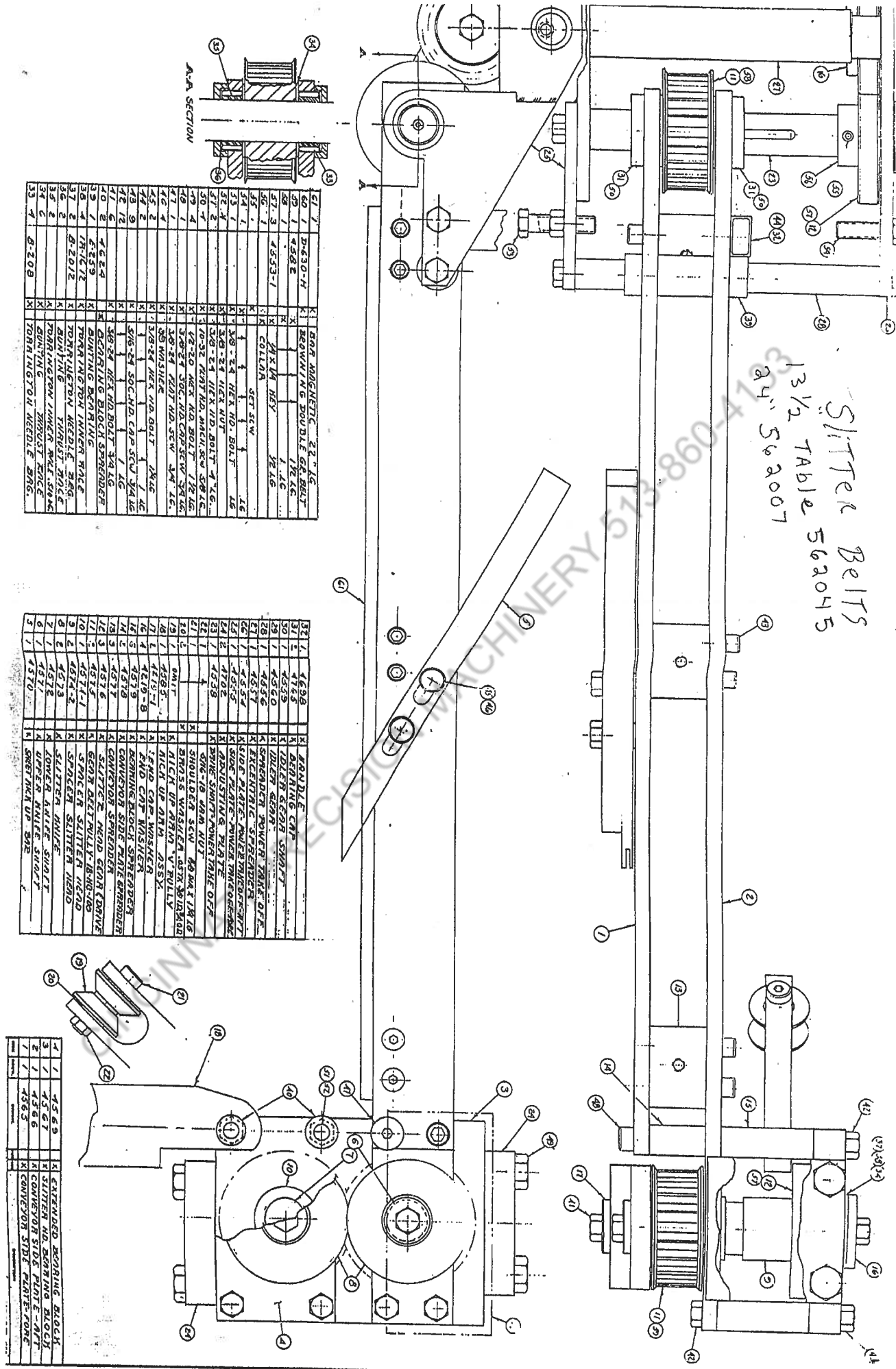
1 3/2" Long Infeed Table Conveyor

Slitter wheel
over LAP
 $\frac{5}{16}$ "

SECTION A-A

37	1	X	1/4-20 Cup Bolt Set Screws 1/4 L.
38	1	X	3/8-24 Hex Nut
39	1	X	1" x 3" L.
40	1	X	1" x 1" L.
41	4	X	3/8-24 Hex W/B Bolt x 3/4 L.
42	4	X	Brackets (Lower Sl)
43	4	X	Washer - Thrust Nut
44	4	X	1/4" x 1/2" x 1/4" L.
45	2	X	Brackets - Middle Rollers
46	2	X	Brackets - Side Guides
47	2	X	Brackets - Side Guides
48	2	X	Brackets - Side Guides
49	2	X	Brackets - Side Guides
50	2	X	Brackets - Side Guides
51	2	X	Brackets - Side Guides
52	2	X	Brackets - Side Guides
53	2	X	Brackets - Side Guides
54	2	X	Brackets - Side Guides
55	2	X	Brackets - Side Guides
56	2	X	Brackets - Side Guides
57	2	X	Brackets - Side Guides
58	2	X	Brackets - Side Guides
59	2	X	Brackets - Side Guides
60	2	X	Brackets - Side Guides
61	2	X	Brackets - Side Guides
62	2	X	Brackets - Side Guides
63	2	X	Brackets - Side Guides
64	2	X	Brackets - Side Guides
65	2	X	Brackets - Side Guides
66	2	X	Brackets - Side Guides
67	2	X	Brackets - Side Guides
68	2	X	Brackets - Side Guides
69	2	X	Brackets - Side Guides
70	2	X	Brackets - Side Guides
71	2	X	Brackets - Side Guides
72	2	X	Brackets - Side Guides
73	2	X	Brackets - Side Guides
74	2	X	Brackets - Side Guides
75	2	X	Brackets - Side Guides
76	2	X	Brackets - Side Guides
77	2	X	Brackets - Side Guides
78	2	X	Brackets - Side Guides
79	2	X	Brackets - Side Guides
80	2	X	Brackets - Side Guides
81	2	X	Brackets - Side Guides
82	2	X	Brackets - Side Guides
83	2	X	Brackets - Side Guides
84	2	X	Brackets - Side Guides
85	2	X	Brackets - Side Guides
86	2	X	Brackets - Side Guides
87	2	X	Brackets - Side Guides
88	2	X	Brackets - Side Guides
89	2	X	Brackets - Side Guides
90	2	X	Brackets - Side Guides
91	2	X	Brackets - Side Guides
92	2	X	Brackets - Side Guides
93	2	X	Brackets - Side Guides
94	2	X	Brackets - Side Guides
95	2	X	Brackets - Side Guides
96	2	X	Brackets - Side Guides
97	2	X	Brackets - Side Guides
98	2	X	Brackets - Side Guides
99	2	X	Brackets - Side Guides
100	2	X	Brackets - Side Guides

Slitter Belts
 13 1/2 TABLE 562045
 24" 562007



61	1	D-430-H	K	BEARING DOUBLE GA. BELT	1.26
62	1	458E	K	AXIAL KEY	1.26
67	3	4553-1	K	COLLAR SET-SCW	1.26
68	1		K	KEY	1.26
69	1		K	KEY	1.26
70	1		K	KEY	1.26
71	1		K	KEY	1.26
72	1		K	KEY	1.26
73	1		K	KEY	1.26
74	1		K	KEY	1.26
75	1		K	KEY	1.26
76	1		K	KEY	1.26
77	1		K	KEY	1.26
78	1		K	KEY	1.26
79	1		K	KEY	1.26
80	1		K	KEY	1.26
81	1		K	KEY	1.26
82	1		K	KEY	1.26
83	1		K	KEY	1.26
84	1		K	KEY	1.26
85	1		K	KEY	1.26
86	1		K	KEY	1.26
87	1		K	KEY	1.26
88	1		K	KEY	1.26
89	1		K	KEY	1.26
90	1		K	KEY	1.26
91	1		K	KEY	1.26
92	1		K	KEY	1.26
93	1		K	KEY	1.26
94	1		K	KEY	1.26
95	1		K	KEY	1.26
96	1		K	KEY	1.26
97	1		K	KEY	1.26
98	1		K	KEY	1.26
99	1		K	KEY	1.26
100	1		K	KEY	1.26

32	1	4628	K	ARMATURE	1.26
33	1	4629	K	ARMATURE	1.26
34	1	4630	K	ARMATURE	1.26
35	1	4631	K	ARMATURE	1.26
36	1	4632	K	ARMATURE	1.26
37	1	4633	K	ARMATURE	1.26
38	1	4634	K	ARMATURE	1.26
39	1	4635	K	ARMATURE	1.26
40	1	4636	K	ARMATURE	1.26
41	1	4637	K	ARMATURE	1.26
42	1	4638	K	ARMATURE	1.26
43	1	4639	K	ARMATURE	1.26
44	1	4640	K	ARMATURE	1.26
45	1	4641	K	ARMATURE	1.26
46	1	4642	K	ARMATURE	1.26
47	1	4643	K	ARMATURE	1.26
48	1	4644	K	ARMATURE	1.26
49	1	4645	K	ARMATURE	1.26
50	1	4646	K	ARMATURE	1.26
51	1	4647	K	ARMATURE	1.26
52	1	4648	K	ARMATURE	1.26
53	1	4649	K	ARMATURE	1.26
54	1	4650	K	ARMATURE	1.26
55	1	4651	K	ARMATURE	1.26
56	1	4652	K	ARMATURE	1.26
57	1	4653	K	ARMATURE	1.26
58	1	4654	K	ARMATURE	1.26
59	1	4655	K	ARMATURE	1.26
60	1	4656	K	ARMATURE	1.26
61	1	4657	K	ARMATURE	1.26
62	1	4658	K	ARMATURE	1.26
63	1	4659	K	ARMATURE	1.26
64	1	4660	K	ARMATURE	1.26
65	1	4661	K	ARMATURE	1.26
66	1	4662	K	ARMATURE	1.26
67	1	4663	K	ARMATURE	1.26
68	1	4664	K	ARMATURE	1.26
69	1	4665	K	ARMATURE	1.26
70	1	4666	K	ARMATURE	1.26
71	1	4667	K	ARMATURE	1.26
72	1	4668	K	ARMATURE	1.26
73	1	4669	K	ARMATURE	1.26
74	1	4670	K	ARMATURE	1.26
75	1	4671	K	ARMATURE	1.26
76	1	4672	K	ARMATURE	1.26
77	1	4673	K	ARMATURE	1.26
78	1	4674	K	ARMATURE	1.26
79	1	4675	K	ARMATURE	1.26
80	1	4676	K	ARMATURE	1.26
81	1	4677	K	ARMATURE	1.26
82	1	4678	K	ARMATURE	1.26
83	1	4679	K	ARMATURE	1.26
84	1	4680	K	ARMATURE	1.26
85	1	4681	K	ARMATURE	1.26
86	1	4682	K	ARMATURE	1.26
87	1	4683	K	ARMATURE	1.26
88	1	4684	K	ARMATURE	1.26
89	1	4685	K	ARMATURE	1.26
90	1	4686	K	ARMATURE	1.26
91	1	4687	K	ARMATURE	1.26
92	1	4688	K	ARMATURE	1.26
93	1	4689	K	ARMATURE	1.26
94	1	4690	K	ARMATURE	1.26
95	1	4691	K	ARMATURE	1.26
96	1	4692	K	ARMATURE	1.26
97	1	4693	K	ARMATURE	1.26
98	1	4694	K	ARMATURE	1.26
99	1	4695	K	ARMATURE	1.26
100	1	4696	K	ARMATURE	1.26

1	1	4563	K	EXTENDED BEARING BLOCK	1.26
2	1	4564	K	SLITTER AND BEARING BLOCK	1.26
3	1	4565	K	CONVEYOR SIDE PLATE-INT	1.26
4	1	4566	K	CONVEYOR SIDE PLATE-TOGS	1.26
5	1	4567	K	CONVEYOR SIDE PLATE-TOGS	1.26
6	1	4568	K	CONVEYOR SIDE PLATE-TOGS	1.26
7	1	4569	K	CONVEYOR SIDE PLATE-TOGS	1.26
8	1	4570	K	CONVEYOR SIDE PLATE-TOGS	1.26
9	1	4571	K	CONVEYOR SIDE PLATE-TOGS	1.26
10	1	4572	K	CONVEYOR SIDE PLATE-TOGS	1.26
11	1	4573	K	CONVEYOR SIDE PLATE-TOGS	1.26
12	1	4574	K	CONVEYOR SIDE PLATE-TOGS	1.26
13	1	4575	K	CONVEYOR SIDE PLATE-TOGS	1.26
14	1	4576	K	CONVEYOR SIDE PLATE-TOGS	1.26
15	1	4577	K	CONVEYOR SIDE PLATE-TOGS	1.26
16	1	4578	K	CONVEYOR SIDE PLATE-TOGS	1.26
17	1	4579	K	CONVEYOR SIDE PLATE-TOGS	1.26
18	1	4580	K	CONVEYOR SIDE PLATE-TOGS	1.26
19	1	4581	K	CONVEYOR SIDE PLATE-TOGS	1.26
20	1	4582	K	CONVEYOR SIDE PLATE-TOGS	1.26
21	1	4583	K	CONVEYOR SIDE PLATE-TOGS	1.26
22	1	4584	K	CONVEYOR SIDE PLATE-TOGS	1.26
23	1	4585	K	CONVEYOR SIDE PLATE-TOGS	1.26
24	1	4586	K	CONVEYOR SIDE PLATE-TOGS	1.26
25	1	4587	K	CONVEYOR SIDE PLATE-TOGS	1.26
26	1	4588	K	CONVEYOR SIDE PLATE-TOGS	1.26
27	1	4589	K	CONVEYOR SIDE PLATE-TOGS	1.26
28	1	4590	K	CONVEYOR SIDE PLATE-TOGS	1.26
29	1	4591	K	CONVEYOR SIDE PLATE-TOGS	1.26
30	1	4592	K	CONVEYOR SIDE PLATE-TOGS	1.26
31	1	4593	K	CONVEYOR SIDE PLATE-TOGS	1.26
32	1	4594	K	CONVEYOR SIDE PLATE-TOGS	1.26
33	1	4595	K	CONVEYOR SIDE PLATE-TOGS	1.26
34	1	4596	K	CONVEYOR SIDE PLATE-TOGS	1.26
35	1	4597	K	CONVEYOR SIDE PLATE-TOGS	1.26
36	1	4598	K	CONVEYOR SIDE PLATE-TOGS	1.26
37	1	4599	K	CONVEYOR SIDE PLATE-TOGS	1.26
38	1	4600	K	CONVEYOR SIDE PLATE-TOGS	1.26
39	1	4601	K	CONVEYOR SIDE PLATE-TOGS	1.26
40	1	4602	K	CONVEYOR SIDE PLATE-TOGS	1.26
41	1	4603	K	CONVEYOR SIDE PLATE-TOGS	1.26
42	1	4604	K	CONVEYOR SIDE PLATE-TOGS	1.26
43	1	4605	K	CONVEYOR SIDE PLATE-TOGS	1.26
44	1	4606	K	CONVEYOR SIDE PLATE-TOGS	1.26