

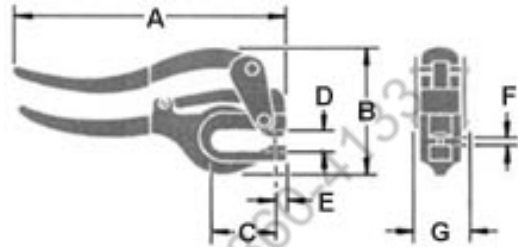
NO. 5 JR HAND PUNCH

Instructions and Parts List



DIMENSIONS - NO. 5 JR.

Reference	IN.	MM
A	8 1/4	209.55
B	3 3/4	96.84
C	1 3/4	44.45
D	7/16	11.11
E	5/16	7.94
F	9/32	7.14
G	1 13/32	35.72



CARE: Oil at hinge points, the punch guide hole in the lower handle, and the punch point is all the care necessary.

OPERATION: To change punches, remove the lower handle screw (4) and pull upper handle assembly back to release punch from eccentric arm slot. Lift punch from guide hole. Put new punch in guide hole and move eccentric arm forward until punch lot is engaged in eccentric arm, then replace lower handle screw. Dies are threaded into lower handle. To avoid breakage, use die key to remove die or screwdriver wide enough to engage both slots. Die should be set high enough so punch can remove slug. Bench mounting base use requires a 7/16" hole in bench for 3/8" hooked clamp rod.

FOR MAXIMUM OPERATOR SAFETY DO:

1. Read and understand this manual.
2. Use only No. 5 punches and dies marked with a **W** or **R-W** designed for this tool.
3. Be sure you punch within the one ton capacity of this tool.
Type and thickness of material versus final hole size will give you this tonnage.
4. Wear safety glasses.

FOR MAXIMUM OPERATOR SAFETY DO NOT:

1. Use punches and dies that are chipped or dulled.
2. Punch over capacity of the tool.
3. Nibble. Punch a full hole not a half hole as punch may contact die.



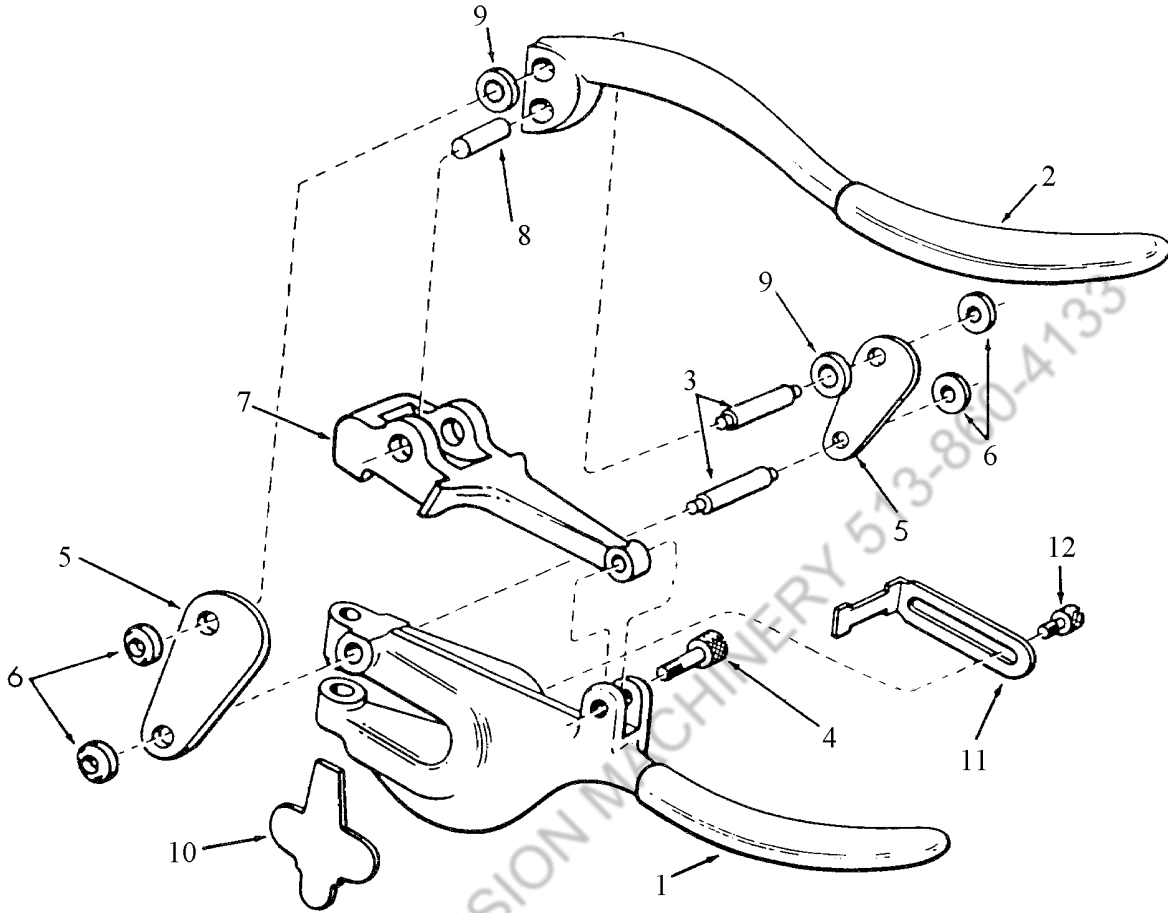
ROPER WHITNEY OF ROCKFORD, INC.

2833 HUFFMAN BLVD., ROCKFORD, ILLINOIS 61103-3990 * 815/962-3011 * FAX 815/962-2227

Website: www.roperwhitney.com * Email: info@roperwhitney.com

NO. 5 JR HAND PUNCH

PARTS LIST



ITEM NO.	PART NO.	PART NAME	QTY.
1	730460001	Lower Handle	1
2	730460002	Upper Handle	1
4	730650004	Lower Handle Screw	1
8	630255200	Cam Pin	1
10	730480009	Key (Die Adjusting)	1
11	730420010	Gauge	1
12	730650011	Gauge Screw	1
13	600000175	Plastic Box (Not Shown)	1
*	235010050	Eccentric Arm	1
Changeover Kit Consists of:			
3	730160003	Eccentric Pin	2
5	730240005	Eccentric Side Link	2
6	730830008	Eccentric Side Link Washer	4
7	591005100	Eccentric Arm	1
9	730830006	Spacing Washer	2

*** ECCENTRIC ARM CHANGE**
 Tools built after **January 2, 1996** have a new, superior Eccentric Arm Assembly. Old style Eccentric Arm Assembly parts are no longer available. Old style No. 5 Jr. Hand Punches can be easily converted to the new style using an Eccentric Arm Changeover Kit.