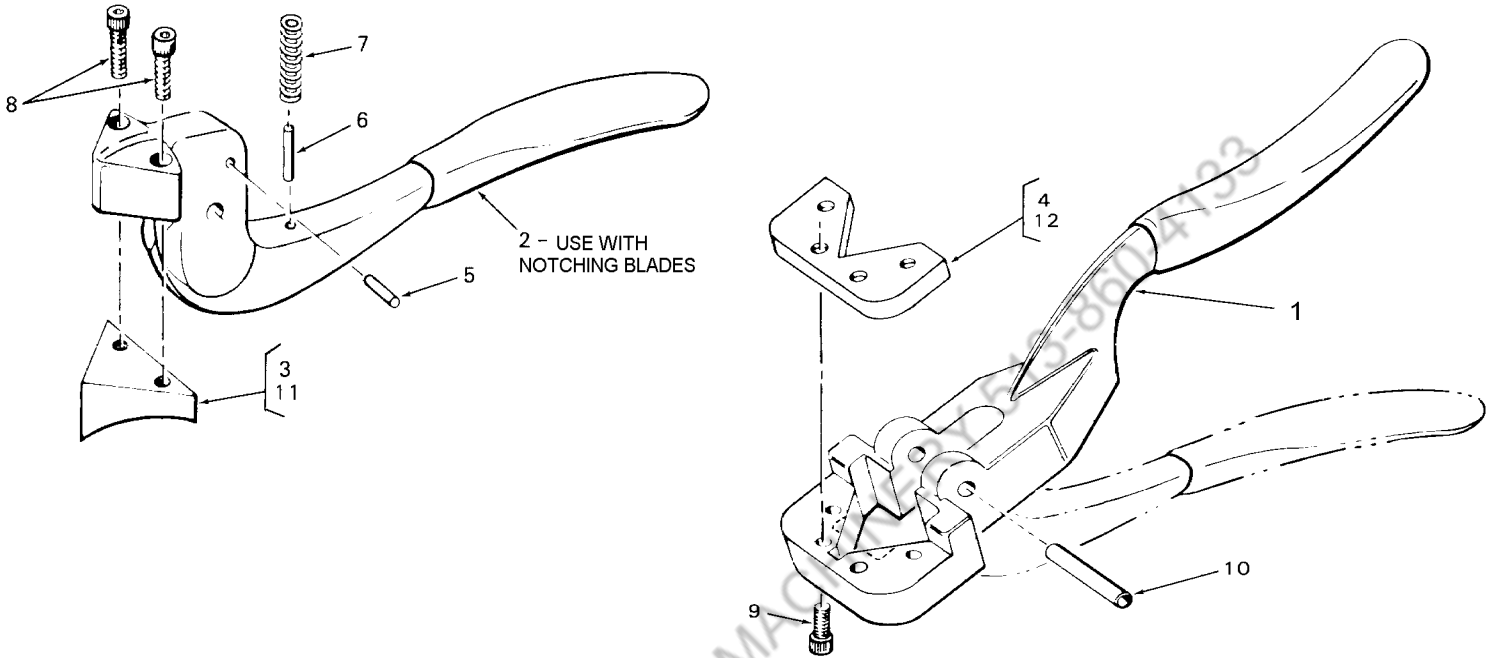


NO. 541 SERIES NOTCHERS INSTRUCTIONS AND PARTS LIST

CARE: Oil hinge point.

BLADES: Purchase special angle and coping blades in sets only.



When ordering, list Item No., Part No., and Part Name

Item No.	Part No.	Part Name	No. Req'd	Old Part No.
541 90 Degree Notcher				
1	748460010	Stationary Handle	1	541-1
2	748460050	Movable Handle	1	541-2
3	748120020	90 Degree Upper Blade	1	541-3
4	748120021	90 Degree Lower Blade	1	541-4
5	600083600	Pivot Stop Pin	1	141-4
6	600083601	Spring Guide Pin	1	141-5
7	600184501	Spring	1	141-6
8	611012026	Screw SHC #8-32 x 3/8 (Upper Blade)	2	WS 598A
9	611012026	Screw SHC #8-32 x 3/8 (Lower Blade)	4	WS 598A
10	600083603	Groove Pin 1/4 x 1-1/4	1	
542 45 Degree Notcher. Use 541 Parts Except:				
11	748120015	45 Degree Upper Blade	1	542-3
12	748120016	45 Degree Lower Blade	1	542-4



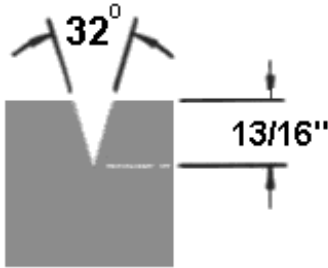
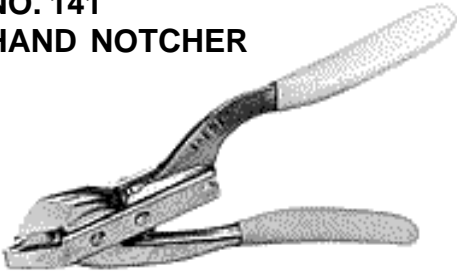
ROPER WHITNEY OF ROCKFORD, INC.

2833 HUFFMAN BLVD., ROCKFORD, ILLINOIS 61103-3990 * 815/962-3011 * FAX 815/962-2227

Website: www.roperswhitney.com * Email: info@roperswhitney.com

NOS. 141, 541 & 542 METAL NOTCHERS

NO. 141 HAND NOTCHER

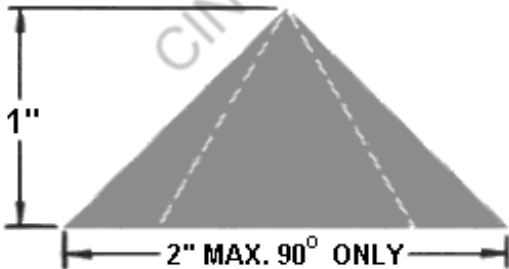
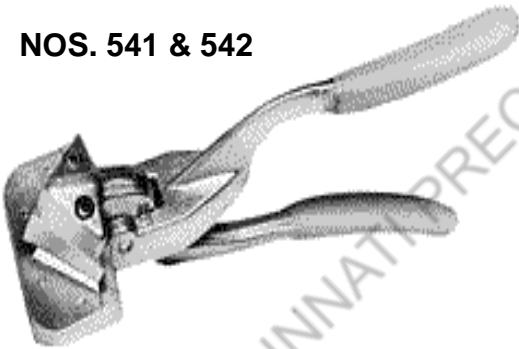


Designed for fast, accurate 32 degree notch in sheet metal. Hook design of jaws permits notching to exact desired depth without slippage and with minimum effort. Spring-return jaws.

SPECIFICATIONS:

Capacity mild steel.....20 ga.
Length overall.....9"
Weight.....1 lb.

NOS. 541 & 542



No. 541 (90 degree) and 542 (45 degree) notcher has a 1" depth with built-in metal stop.

SPECIFICATIONS:

Capacity mild steel.....20 ga.
Length overall.....9"
Weight.....2 lb.



ROPER WHITNEY OF ROCKFORD, INC.

2833 HUFFMAN BLVD., ROCKFORD, ILLINOIS 61103-3990 * 815/962-3011 * FAX 815/962-2227

Website: www.roperwhitney.com * Email: info@roperwhitney.com